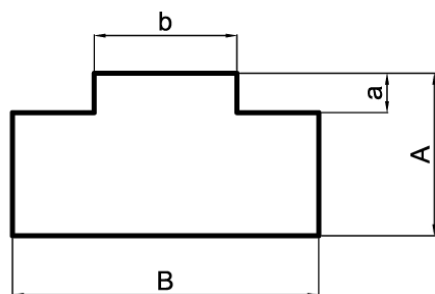
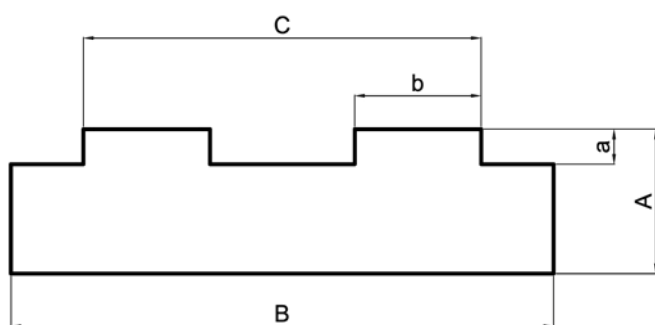


Profilo a T per catena semplice - *T profile simple chain*



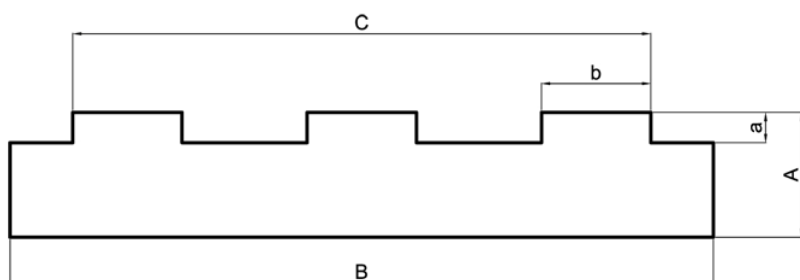
| COD. | DIMENSIONI CATENA CHAIN DIMENSIONS | RIF.ISO | B | A | b | a |
|------|---------------------------------------|---------|----|----------|------|-----|
| T0 | $\frac{3}{8}'' \times \frac{7}{32}''$ | 06 B1 | 15 | 10 | 5,4 | 1,5 |
| T1 | $\frac{1}{2}'' \times \frac{5}{16}''$ | 08 B1 | 20 | 10-15-20 | 7,4 | 2,2 |
| T2 | $\frac{5}{8}'' \times \frac{3}{8}''$ | 10 B1 | 20 | 10-15-20 | 9,2 | 2,6 |
| T3 | $\frac{3}{4}'' \times \frac{7}{16}''$ | 12 B1 | 25 | 10-15-20 | 11,3 | 2,4 |
| T4 | 1" x 17 mm | 16 B1 | 40 | 15-20 | 16,5 | 3,5 |
| T5 | 1 $\frac{1}{4}$ " x $\frac{3}{4}$ " | 20 B1 | 45 | 15-20 | 19,0 | 4,3 |
| T6 | 1 $\frac{1}{2}$ " x 1" | 24 B1 | 60 | 15-20 | 24,6 | 5,6 |
| T7 | 1 $\frac{3}{4}$ " x 31 mm | 28 B1 | 75 | 20 | 30,0 | 6,9 |
| T8 | 2" x 31 mm | 32 B1 | 80 | 20 | 30,0 | 7,8 |

Profilo a T per catena doppia - *T profile double chain*



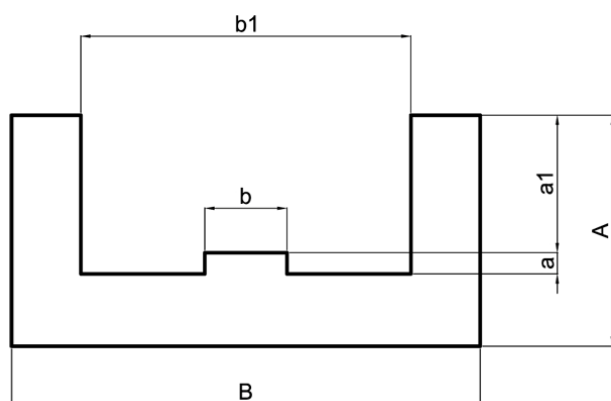
| COD. | DIMENSIONI CATENA CHAIN DIMENSIONS | RIF.ISO | B | A | b | a | c |
|------|---------------------------------------|---------|-----|----------|------|-----|-------|
| T0.2 | $\frac{3}{8}'' \times \frac{7}{32}''$ | 06 B2 | 25 | 10 | 5,4 | 1,5 | 15,74 |
| T1.2 | $\frac{1}{2}'' \times \frac{5}{16}''$ | 08 B2 | 35 | 10-15-20 | 7,4 | 2,2 | 21,42 |
| T2.2 | $\frac{5}{8}'' \times \frac{3}{8}''$ | 10 B2 | 40 | 10-15-20 | 9,2 | 2,6 | 25,79 |
| T3.2 | $\frac{3}{4}'' \times \frac{7}{16}''$ | 12 B2 | 45 | 15-20 | 11,3 | 2,4 | 30,76 |
| T4.2 | 1" x 17 mm | 16 B2 | 65 | 15-20 | 16,5 | 3,5 | 48,38 |
| T5.2 | 1 $\frac{1}{4}$ " x $\frac{3}{4}$ " | 20 B2 | 70 | 15-20 | 19,0 | 4,3 | 54,45 |
| T6.2 | 1 $\frac{1}{2}$ " x 1" | 24 B2 | 88 | 20 | 24,6 | 5,6 | 72,96 |
| T7.2 | 1 $\frac{3}{4}$ " x 31 mm | 28 B2 | 105 | 25 | 30,0 | 6,9 | 89,56 |
| T8.2 | 2" x 31 mm | 32 B2 | 105 | 30 | 30,0 | 7,8 | 88,55 |

Profilo a T per catena tripla - *T profile triple chain*



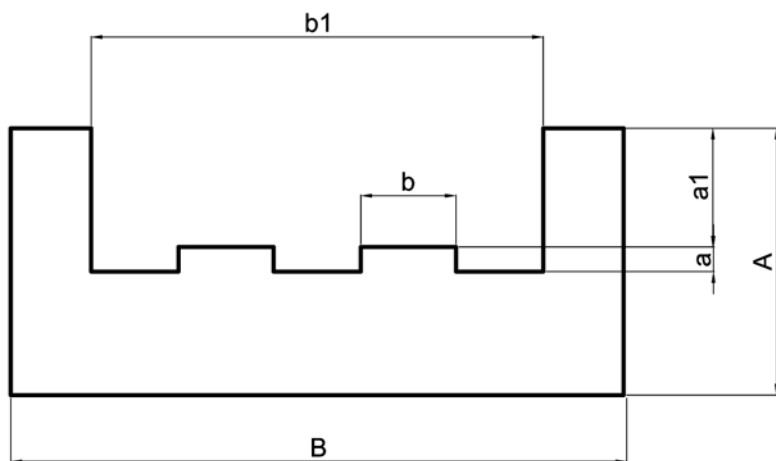
| COD. | DIMENSIONI CATENA CHAIN DIMENSIONS | RIF.ISO | B | A | b | a | c |
|------|---------------------------------------|---------|----|----------|------|-----|-------|
| T0.3 | $\frac{3}{8}'' \times \frac{7}{32}''$ | 06 B3 | 35 | 10 | 5,4 | 1,5 | 25,88 |
| T1.3 | $\frac{1}{2}'' \times \frac{5}{16}''$ | 08 B3 | 45 | 10-15-20 | 7,4 | 2,2 | 35,24 |
| T2.3 | $\frac{5}{8}'' \times \frac{3}{8}''$ | 10 B3 | 55 | 10-15-20 | 9,2 | 2,6 | 42,38 |
| T3.3 | $\frac{3}{4}'' \times \frac{7}{16}''$ | 12 B3 | 60 | 15-20 | 11,3 | 2,4 | 50,22 |
| T4.3 | 1" x 17 mm | 16 B3 | 95 | 20 | 16,5 | 3,5 | 80,26 |

Profilo a E per catena semplice - *E profile simple chain*



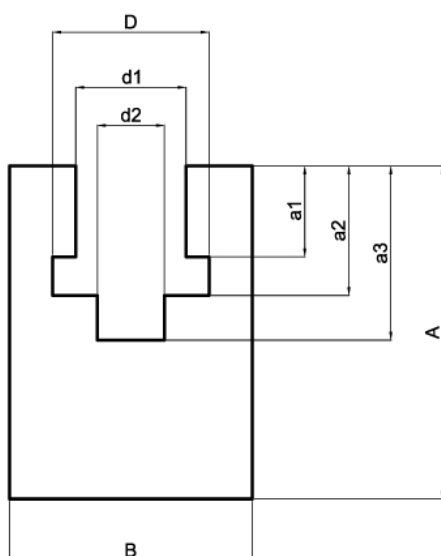
| COD. | DIMENSIONI CATENA CHAIN DIMENSIONS | RIF.ISO | B | A | a | a1 | b | b1 |
|------|---------------------------------------|---------|----|----|-----|-------|------|----|
| E0 | $\frac{3}{8}'' \times \frac{7}{32}''$ | 06 B1 | 25 | 10 | 1,5 | 4,35 | 5,4 | 15 |
| E1 | $\frac{1}{2}'' \times \frac{5}{16}''$ | 08 B1 | 30 | 15 | 2,2 | 7,17 | 7,4 | 20 |
| E2 | $\frac{5}{8}'' \times \frac{3}{8}''$ | 10 B1 | 33 | 20 | 2,6 | 9,45 | 9,2 | 23 |
| E3 | $\frac{3}{4}'' \times \frac{7}{16}''$ | 12 B1 | 38 | 20 | 2,4 | 11,11 | 11,3 | 28 |
| E4 | 1" x 17 mm | 16 B1 | 51 | 25 | 3,5 | 16,48 | 16,5 | 41 |
| E5 | $1\frac{1}{4}'' \times \frac{3}{4}''$ | 20 B1 | 57 | 30 | 4,3 | 19,77 | 19,0 | 47 |
| E6 | $1\frac{1}{2}'' \times 1''$ | 24 B1 | 70 | 40 | 4,5 | 29,40 | 24,6 | 60 |

Profilo a E per catena doppia - E profile double chain



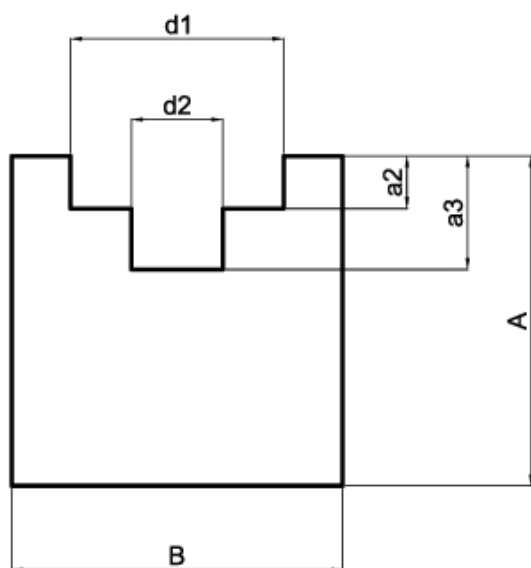
| COD. | DIMENSIONI CATENA CHAIN DIMENSIONS | RIF.ISO | B | A | a | a1 | b | b1 |
|------|---------------------------------------|---------|----|----|-----|-------|------|----|
| E0.2 | $\frac{3}{8}'' \times \frac{7}{32}''$ | 06 B2 | 36 | 15 | 1,5 | 4,35 | 5,4 | 26 |
| E1.2 | $\frac{1}{2}'' \times \frac{5}{16}''$ | 08 B2 | 45 | 20 | 2,2 | 7,17 | 7,4 | 35 |
| E2.2 | $\frac{5}{8}'' \times \frac{3}{8}''$ | 10 B2 | 50 | 25 | 2,6 | 9,45 | 9,2 | 40 |
| E3.2 | $\frac{3}{4}'' \times \frac{7}{16}''$ | 12 B2 | 56 | 25 | 2,4 | 11,11 | 11,3 | 46 |
| E4.2 | 1" x 17 mm | 16 B2 | 85 | 30 | 3,5 | 16,48 | 16,5 | 75 |

Profilo BL per catena semplice - BL profile simple chain



| COD. | DIMENSIONI CATENA CHAIN DIMENSIONS | RIF.ISO | B | A | a1 | a2 | a3 | d1 | D | d2 |
|------|---------------------------------------|---------|----|----|------|------|------|------|------|------|
| BL0 | $\frac{3}{8}$ " x $\frac{7}{32}$ " | 06 B1 | 20 | 25 | 5,6 | 8,7 | 10,0 | 6,6 | 9,3 | 4,0 |
| BL1 | $\frac{1}{2}$ " x $\frac{5}{16}$ " | 08 B1 | 24 | 30 | 7,6 | 11,5 | 13,5 | 8,7 | 13,5 | 5,0 |
| BL2 | $\frac{5}{8}$ " x $\frac{3}{8}$ " | 10 B1 | 30 | 35 | 9,5 | 13,5 | 14,8 | 10,4 | 15,4 | 6,0 |
| BL3 | $\frac{3}{4}$ " x $\frac{7}{16}$ " | 12 B1 | 40 | 35 | 11,5 | 16,5 | 17,5 | 12,3 | 17,5 | 7,0 |
| BL4 | 1" x 17 mm | 16 B1 | 40 | 45 | 16,9 | 25,7 | 26,8 | 16,1 | 24,4 | 9,0 |
| BL5 | 1" x 17 mm | 20 B1 | 50 | 50 | 19,4 | 29,3 | 31,2 | 19,3 | 27,5 | 11,0 |
| BL6 | 1 $\frac{1}{4}$ " x $\frac{3}{4}$ " | 24 B1 | 60 | 60 | 25,2 | 38,2 | 40,1 | 25,7 | 36,5 | 16,0 |
| BL7 | 1 $\frac{1}{2}$ " x 1" | 28 B1 | 60 | 70 | 30,8 | 46,9 | 48,9 | 28,3 | 41,5 | 17,0 |
| BL8 | 1 $\frac{3}{4}$ " x 31 mm | 32 B1 | 70 | 75 | 30,8 | 47,3 | 53,0 | 29,6 | 44,5 | 19,0 |

Profilo U per catena semplice - U profile simple chain

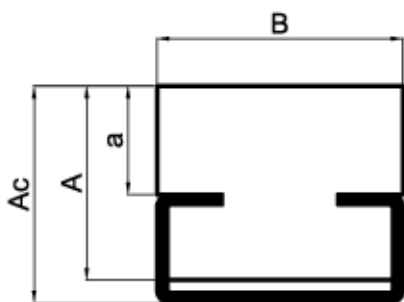


| COD. | DIMENSIONI CATENA CHAIN DIMENSIONS | RIF.ISO | B | A | a2 | a3 | d1 | d2 |
|------|---------------------------------------|---------|----|----|-----|------|------|-----|
| U0 | $\frac{3}{8}$ " x $\frac{7}{32}$ " | 06 B1 | 20 | 15 | 2,8 | 4,2 | 9,2 | 4,0 |
| U1 | $\frac{1}{2}$ " x $\frac{5}{16}$ " | 08 B1 | 25 | 15 | 3,5 | 4,8 | 12,7 | 5,0 |
| U2 | $\frac{5}{8}$ " x $\frac{3}{8}$ " | 10 B1 | 25 | 15 | 3,6 | 5,1 | 15,2 | 6,0 |
| U3 | $\frac{3}{4}$ " x $\frac{7}{16}$ " | 12 B1 | 25 | 20 | 3,9 | 5,7 | 16,7 | 7,0 |
| U4 | 1" x 17 mm | 16 B1 | 35 | 25 | 8,4 | 10,0 | 24,4 | 9,0 |

Profilo CP – CP profile

Con guida in lamiera zincata. A richiesta in acciaio inox
Lunghezza standard mt.2 – Altre lunghezze a richiesta

Galvanized metal guide, stainless steel on demand.
Standard length mt.2 – Other lengths on demand

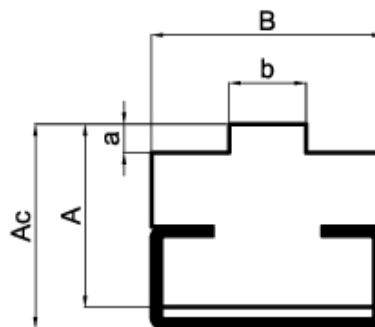


| TIPO | B | A | a | Ac |
|---------|----|----|----|------|
| C1 A 5 | 20 | 5 | 1 | 6,2 |
| C1 A 10 | 20 | 10 | 6 | 11,2 |
| C1 A 15 | 20 | 15 | 11 | 16,2 |
| C3 A 10 | 20 | 10 | 4 | 14,0 |
| C3 A 15 | 20 | 15 | 7 | 17,0 |
| C3 A 20 | 20 | 20 | 12 | 22,0 |
| C5 A 10 | 28 | 10 | 3 | 15,0 |
| C5 A 15 | 28 | 15 | 6 | 18,0 |
| C5 A 20 | 28 | 20 | 12 | 24,0 |
| C9 A 10 | 38 | 10 | 3 | 21,0 |
| C9 A 15 | 38 | 15 | 6 | 24,0 |
| C9 A 20 | 38 | 20 | 12 | 30,0 |

Profilo CT per catena semplice – CT profile simple chain

Con guida in lamiera zincata. A richiesta in acciaio inox
Lunghezza standard mt.2 - Altre lunghezze a richiesta

Galvanized metal guide, stainless steel on demand.
Standard length mt.2 – Other lengths on demand

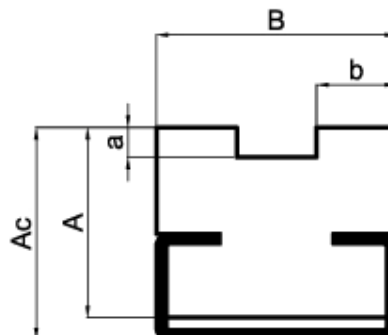


| COD. | DIMENSIONI CATENA CHAIN DIMENSIONS | RIF.ISO | B | A | a | Ac | b |
|------------|---------------------------------------|---------|----|----|-----|----|------|
| T0 C3 A 15 | $\frac{3}{8}'' \times \frac{7}{32}''$ | 06 B1 | 20 | 15 | 1,5 | 17 | 5,4 |
| T1 C3 A 15 | $\frac{1}{2}'' \times \frac{5}{16}''$ | 08 B1 | 20 | 15 | 2,2 | 17 | 7,4 |
| T2 C3 A 15 | $\frac{5}{8}'' \times \frac{3}{8}''$ | 10 B1 | 20 | 15 | 2,6 | 17 | 9,2 |
| T3 C3 A 15 | $\frac{3}{4}'' \times \frac{7}{16}''$ | 12 B1 | 20 | 15 | 2,4 | 17 | 11,3 |
| T4 C5 A 15 | 1" x 17 mm | 16 B1 | 28 | 15 | 3,5 | 18 | 16,5 |
| T5 C9 A 20 | 1¼" x ¾" | 20 B1 | 38 | 20 | 4,3 | 24 | 19,0 |

Profilo CT per catena doppia - CT profile double chain

Con guida in lamiera zincata. A richiesta in acciaio inox
Lunghezza standard mt.2 - Altre lunghezze a richiesta

Galvanized metal guide, stainless steel on demand.
Standard length mt.2 - Other lengths on demand

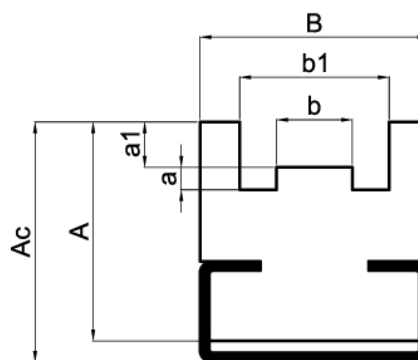


| COD. | DIMENSIONI CATENA CHAIN DIMENSIONS | RIF.ISO | B | A | a | Ac | b |
|--------------|---------------------------------------|---------|------|----|-----|----|------|
| T0.2 C3 A 15 | $\frac{3}{8}'' \times \frac{7}{32}''$ | 06 B2 | 15,7 | 15 | 1,5 | 17 | 5,4 |
| T1.2 C3 A 15 | $\frac{1}{2}'' \times \frac{5}{16}''$ | 08 B2 | 21,4 | 15 | 2,2 | 17 | 7,4 |
| T2.2 C3 A 15 | $\frac{5}{8}'' \times \frac{3}{8}''$ | 10 B2 | 25,9 | 15 | 2,6 | 19 | 9,2 |
| T3.2 C3 A 15 | $\frac{3}{4}'' \times \frac{7}{16}''$ | 12 B2 | 30,7 | 15 | 2,4 | 19 | 11,3 |
| T4.2 C5 A 15 | 1" x 17 mm | 16 B2 | 48,3 | 20 | 3,5 | 27 | 16,5 |

Profilo CE per catena semplice - CE profile simple chain

Con guida in lamiera zincata. A richiesta in acciaio inox
Lunghezza standard mt.2 - Altre lunghezze a richiesta

Galvanized metal guide, stainless steel on demand.
Standard length mt.2 - Other lengths on demand

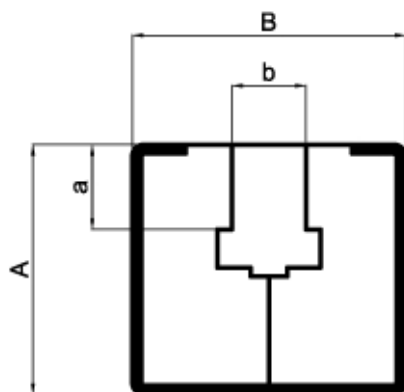


| COD. | DIMENSIONI CATENA CHAIN DIMENSIONS | RIF.ISO | B | A | a | a1 | Ac | b | b1 |
|-------|---------------------------------------|---------|----|------|-----|-------|------|------|----|
| E0 C3 | $\frac{3}{8}'' \times \frac{7}{32}''$ | 06 B1 | 25 | 18,0 | 1,5 | 4,35 | 20,0 | 5,4 | 15 |
| E1 C5 | $\frac{1}{2}'' \times \frac{5}{16}''$ | 08 B1 | 30 | 24,5 | 2,2 | 7,17 | 27,0 | 7,4 | 20 |
| E2 C5 | $\frac{5}{8}'' \times \frac{3}{8}''$ | 10 B1 | 33 | 29,5 | 2,6 | 9,45 | 32,0 | 9,2 | 23 |
| E3 C9 | $\frac{3}{4}'' \times \frac{7}{16}''$ | 12 B1 | 38 | 35,0 | 2,4 | 11,11 | 38,5 | 11,3 | 28 |
| E4 C9 | 1" x 17 mm | 16 B1 | 51 | 40,0 | 3,5 | 16,48 | 43,5 | 16,5 | 41 |

Profilo C 10 P per catena semplice - C10 P simple chain

Con guida in lamiera zincata. A richiesta in acciaio inox
Lunghezza standard mt.2 - Altre lunghezze a richiesta

Galvanized metal guide, stainless steel on demand.
Standard length mt.2 - Other lengths on demand

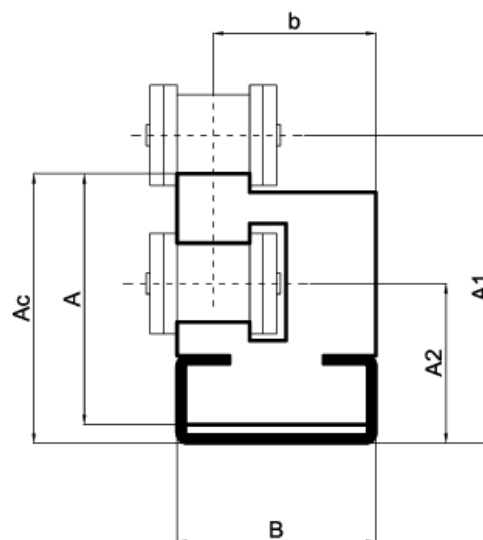


| COD. | DIMENSIONI CATENA CHAIN DIMENSIONS | RIF.ISO | b | B | a | A |
|--------|---------------------------------------|---------|------|----|------|----|
| C 10.0 | $\frac{3}{8}'' \times \frac{7}{32}''$ | 06 B1 | 6,6 | 30 | 5,6 | 24 |
| C 10.1 | $\frac{1}{2}'' \times \frac{5}{16}''$ | 08 B1 | 8,7 | 30 | 7,6 | 24 |
| C 10.2 | $\frac{5}{8}'' \times \frac{3}{8}''$ | 10 B1 | 10,4 | 30 | 9,5 | 24 |
| C 10.3 | $\frac{3}{4}'' \times \frac{7}{16}''$ | 12 B1 | 12,3 | 30 | 11,5 | 24 |
| C 11.4 | 1" x 17 mm | 16 B1 | 16,1 | 45 | 15,5 | 40 |

Profilo Combi A-R per catena semplice - Combi A-R simple chain

Con guida in lamiera zincata. A richiesta in acciaio inox
Lunghezza standard mt.2 - Altre lunghezze a richiesta

Galvanized metal guide, stainless steel on demand.
Standard length mt.2 - Other lengths on demand

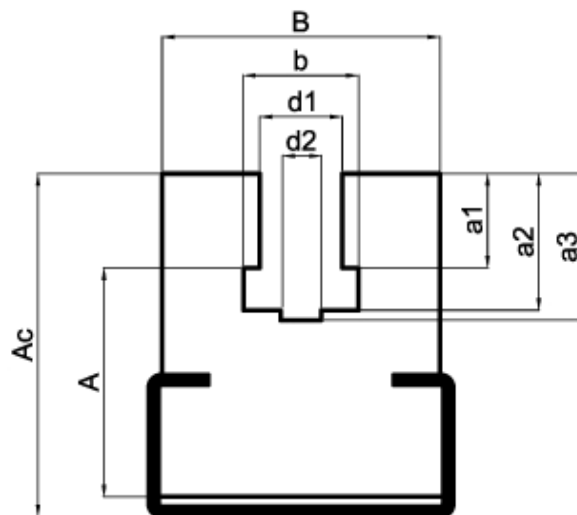


| COD. | DIMENSIONI CATENA CHAIN DIMENSIONS | RIF.ISO | A | B | A1 | A2 | Ac | b |
|------------|---------------------------------------|---------|------|----|------|------|------|-------|
| Combi 0 C3 | $\frac{3}{8}'' \times \frac{7}{32}''$ | 06 B1 | 26,4 | 20 | 31,6 | 19,5 | 28,4 | 17,3 |
| Combi 1 C3 | $\frac{1}{2}'' \times \frac{5}{16}''$ | 08 B1 | 28,0 | 20 | 34,8 | 18,9 | 30,5 | 16,5 |
| Combi 2 C3 | $\frac{5}{8}'' \times \frac{3}{8}''$ | 10 B1 | 34,4 | 20 | 41,1 | 21,2 | 36,0 | 15,5 |
| Combi 3 C5 | $\frac{3}{4}'' \times \frac{7}{16}''$ | 12 B1 | 38,5 | 28 | 47,5 | 24,8 | 41,5 | 22,25 |
| Combi 4 C9 | 1" x 17 mm | 16 B1 | 52,4 | 38 | 69,4 | 39,1 | 61,4 | 29,75 |

Profilo CBL per catena semplice - CBL simple chain

Con guida in lamiera zincata. A richiesta in acciaio inox
Lunghezza standard mt.2 - Altre lunghezze a richiesta

Galvanized metal guide, stainless steel on demand.
Standard length mt.2 - Other lengths on demand



| COD. | DIMENSIONI CATENA CHAIN DIMENSIONS | RIF.ISO | B | A | a1 | a2 | a3 | Ac | d1 | b | d2 |
|--------|---|---------|----|----|------|------|------|----|------|------|----|
| BL0 C3 | $\frac{3}{8}$ " x $\frac{7}{32}$ " | 06 B1 | 20 | 25 | 5,6 | 8,7 | 10,0 | 27 | 6,6 | 9,3 | 4 |
| BL1 C5 | $\frac{1}{2}$ " x $\frac{5}{16}$ " | 08 B1 | 24 | 30 | 7,6 | 11,5 | 13,5 | 33 | 8,7 | 13,5 | 5 |
| BL2 C5 | $\frac{5}{8}$ " x $\frac{3}{8}$ " | 10 B1 | 30 | 35 | 9,5 | 13,5 | 14,8 | 38 | 10,4 | 15,4 | 6 |
| BL3 C9 | $\frac{3}{4}$ " x $\frac{7}{16}$ " | 12 B1 | 40 | 35 | 11,5 | 16,5 | 17,5 | 39 | 12,3 | 17,5 | 7 |
| BL4 C9 | 1" x 17 mm | 16 B1 | 40 | 45 | 16,9 | 25,7 | 26,8 | 49 | 16,1 | 24,4 | 9 |